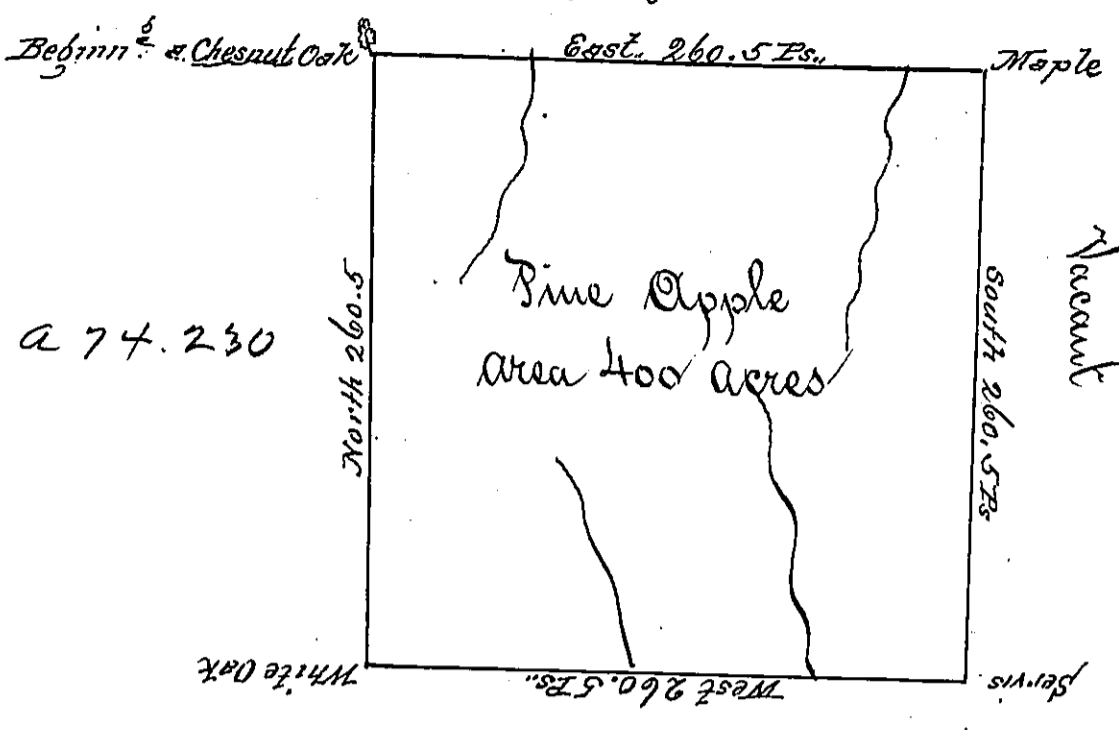


a 69.91
George Douglass



The Above is a Draught of Survey made Decemb^r. 13th 1784 In Pursuance of a Warrant Granted to James Douglass Dated the 13th Day of September 1784 Situated on the Waters of Wheeling Creek Adjoining Lands of George Douglass in Washington County Called Pine Apple Containing four hundred Acres with the usual Allowance of six per Cent for Records

John Lukens Esq. S. G. J.

David Reedick D. D.

IN TESTIMONY that the above is a copy of the original remaining on file in the Department of Internal Affairs of Pennsylvania, made conformably to an Act of Assembly approved the 16th day of February, 1833, I have hereunto set my Hand and caused the Seal of said Department to be affixed at Harrisburg, this first day of January 1901

James W. Latta
Secretary of Internal Affairs.